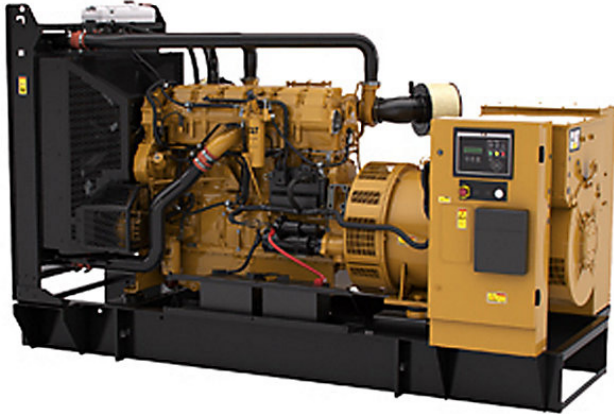


## CATERPILLAR C18-700



### GENERAL SET DATA

ENGINE REF:	C18
ALTERNATOR REF:	LC7024H
STANDARD CONTROL PANEL:	EMCP 4
OPTIONAL CONTROL PANEL:	EMCP 4.2+

### OUTPUT

FREQUENCY:	50 Hz
VOLTAGE:	400/230
PRIME POWER:	630 kVA
STANDBY POWER:	700 kVA

### DIMENSIONS

#### OPEN MODEL

LENGTH:	3976 mm
WIDTH:	1453 mm
HEIGHT:	2155 mm
COMPLETE WEIGHT:	3732 Kg
FUEL TANK CAPACITY:	-

#### CLOSED MODEL

LENGTH:	-
WIDTH:	-
HEIGHT:	-
FULL WEIGHT:	-
FUEL TANK CAPACITY:	-
ACOUSTIC PRESSURE AT 1M:	-
ACOUSTIC PRESSURE AT 7M:	-

# CATERPILLAR C18-700

## TECHNICAL DATA

### GENERAL ENGINE DATA

MANUFACTURER:	CAT
MODEL REF:	C18
SPEED:	1500 RPM
POWER PRP:	520 kW
POWER LTP:	560 kW
NUMBER OF CYLINDERS:	6
DISPLACEMENT:	18.13 L
BORE:	145 mm
STROKE:	183 mm
COMPRESSION RATIO:	14.5
COOLING SYSTEM:	WATER
AIR INLET SYSTEM:	TURBO
OIL CAPACITY:	-
EXHAUST GAS TEMP:	550.5 °C
EXHAUST GAS FLOW:	101.2 m <sup>3</sup> / min

### ALTERNATOR DATA

ALTERNATOR REF:	LC7024H
INSULATION CLASS:	H
INDICATION OF PROTECTION:	IP23

### FUEL

CONSUMPTION AT 100%:	130.6 L/hr
CONSUMPTION AT 75%:	96.9 L/hr
CONSUMPTION AT 50%:	67 L/hr

### TERMS & CONDITIONS

#### Applicable Codes and Standards:

AS1359, CSA C22.2 No100-04, UL142,UL489, UL869, UL2200, NFPA37, NFPA70, NFPA99, NFPA110, IBC, IEC60034-1, ISO3046, ISO8528, NEMA MG1-22,NEMA MG1-33, 2006/95/EC, 2006/42/EC, 2004/108/EC.